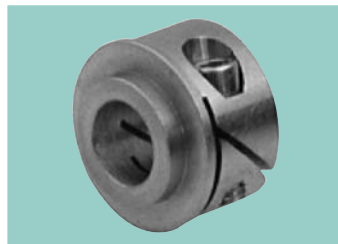
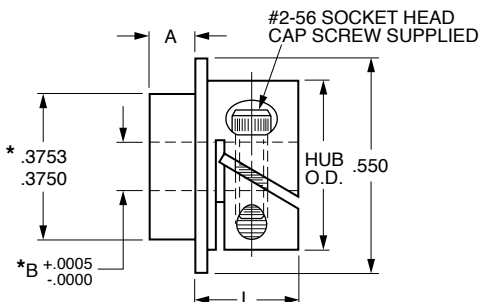


SDPSI**Precision Gear & Dial Hubs – Fairloc® Type****Stock Drive Products/Sterling Instrument ■ Phone: 516-328-3300 ■ Fax: 516-326-8827**

S Precision
Component

*Diameters Concentric Within .0003 T.I.R.

MATERIAL: 303 Stainless Steel

Catalog Number	A	B Bore	L	Hub O.D.	Clearance Radius
S2F06Y-062090	.062	.0900	.265	.437	.273
S2F06Y-125090	.125	.0937			
S2F06Y-062094	.062	.0937			
S2F06Y-125094	.125	.0937			
S2F06Y-062120	.062	.1200			
S2F06Y-125120	.125	.1200			
S2F06Y-062125	.062	.1248	.295	.530	.304
S2F06Y-125125	.125	.1248			
S2F06Y-062187	.062	.1873			
S2F06Y-125187	.125	.1873			
S2F06Y-187187	.187	.1873			
S2F06Y-062241	.062	.2405			
S2F06Y-125241	.125	.2405	.295	.530	.304
S2F06Y-187241	.187	.2405			
S2F06Y-062250	.062	.2498			
S2F06Y-125250	.125	.2498			
S2F06Y-187250	.187	.2498			

Available on special order: Hubs assembled to gears or dials, and passivation.

Fairloc® hubs require controlled shaft tolerances.
Suggested clearance fit between the bore and the shaft is .0001/.0008.