

Inch Inch Inch Inch Inch Inch Inch Inch Inch Inch

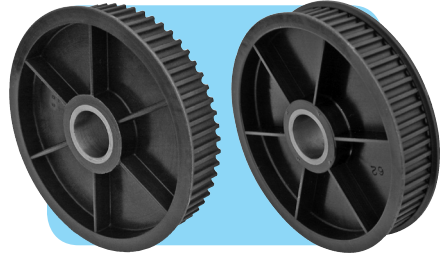
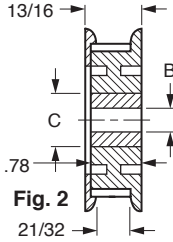
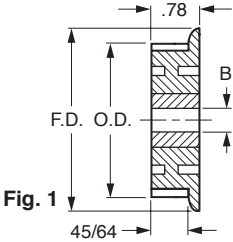
Shaftloc® HTD® Pulleys - 5 mm Pitch

Stock Drive Products/Sterling Instrument ■ Phone: 516-328-3300 ■ Fax: 516-326-8827

■ **MOLDED WITH METAL INSERT**

■ **SINGLE OR DOUBLE FLANGE**

PATENTED

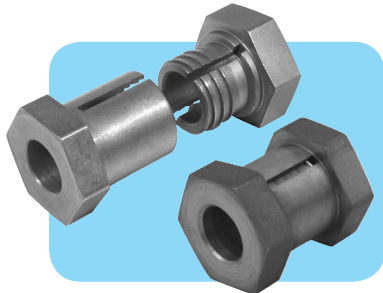
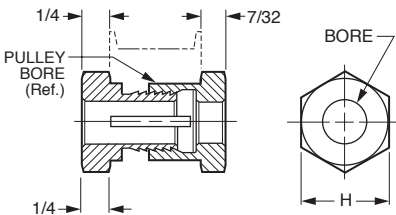


MATERIAL: Pulley - Nylon – Black, Fiberglass Reinforced
Insert - Steel, Overmolded

FOR 15 mm BELTS (.591 INCH)

Catalog Number		No. of Grooves	P.D.	O.D.	F.D.	B +.002 -.000	C
Single Flange – Fig. 1	Double Flange – Fig. 2						
A 6T25-H19SF1520	A 6T25-H19DF1520	19	1.191	1.146	1.31	.625	3/4
A 6T25-H20SF1524	A 6T25-H20DF1524	20	1.253	1.208	1.37		
A 6T25-H22SF1524	A 6T25-H22DF1524	22	1.379	1.334	1.50		
A 6T25-H24SF1524	A 6T25-H24DF1524	24	1.504	1.459	1.62		
A 6T25-H28SF1524	A 6T25-H28DF1524	28	1.754	1.709	1.87		
A 6T25-H30SF1524	A 6T25-H30DF1524	30	1.880	1.835	2.00		
A 6T25-H32SF1524	A 6T25-H32DF1524	32	2.005	1.960	2.12		
A 6T25-H36SF1524	A 6T25-H36DF1524	36	2.256	2.211	2.41		
A 6T25-H38SF1524	—	38	2.381	2.336	2.54		
A 6T25-H40SF1524	—	40	2.506	2.461	2.66	.750	1
A 6T25-H42SF1524	—	42	2.632	2.587	2.79		
A 6T25-H44SF1524	—	44	2.757	2.712	2.91		
A 6T25-H48SF1524	—	48	3.008	2.963	3.16		
A 6T25-H50SF1524	—	50	3.133	3.088	3.26		
A 6T25-H56SF1524	—	56	3.509	3.464	3.66		
A 6T25-H60SF1524	—	60	3.760	3.715	3.92		
A 6T25-H62SF1524	A 6T25-H62DF1524	62	3.885	3.840	4.03		
A 6T25-H64SF1524	—	64	4.010	3.965	4.16		
* A 6T25-H72SF1524	—	72	4.511	4.466	4.66		
A 6T25-H80SF1524	—	80	5.013	4.968	5.16		

NOTE: Pulleys with 19 to 24 grooves do not have webs.
*Pulley has a steel insert, 1-1/2 across flats.



MATERIAL: 416 Stainless Steel

SLEEVES Catalog Number	Pulley Bore (Ref.)	Shaftloc Bore +.001, -.000	H Hex Size	Max. Δ Torque Capacity lb.in.
§ A 7Z37-030578	.625	.375	3/4	250
♦ A 7Z37-040670	.750	.500	7/8	

ΔBased on mating components being degreased before assembly with Shaftloc® coupling.
§ A 3/4 O.D. x 5/8 I.D. x .05 thick washer, Catalog Number A 7X 8-C20050 is supplied.
♦ A 7/8 O.D. x 3/4 I.D. x .05 thick washer, Catalog Number A 7X 8-C24050 is supplied.