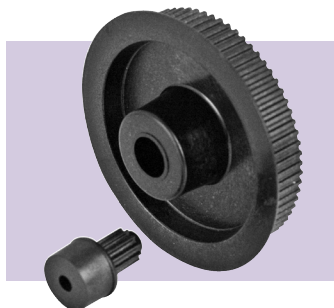
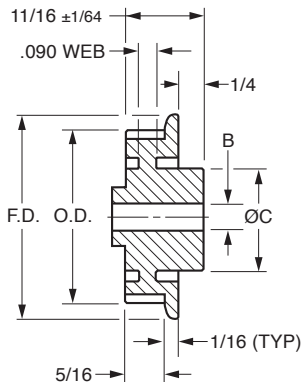


■ MOLDED

■ **TRUE METRIC[®]** PROFILE

■ SINGLE FLANGE



FOR 6 mm BELTS (.236 INCH)

MATERIAL: Polycarbonate, Fiberglass Reinforced

Catalog Number	No. of Grooves	P.D.	O.D.	F.D.	B Bore +.001 -.000	C Hub
A 6L51-012SF0604	12	.301	.281	.47	.125	7/16
A 6L51-013SF0604	13	.326	.306	.51		
A 6L51-014SF0604	14	.351	.331	.53		
A 6L51-015SF0604	15	.376	.356	.55		
A 6L51-016SF0604	16	.401	.381	.58		
A 6L51-018SF0606	18	.451	.431	.63	.1875	1/2
A 6L51-020SF0606	20	.501	.481	.68		
A 6L51-021SF0606	21	.526	.506	.70		
A 6L51-022SF0606	22	.551	.531	.73		
A 6L51-024SF0606	24	.602	.582	.78		
A 6L51-028SF0608	28	.702	.682	.88	.250	11/16
A 6L51-030SF0608	30	.752	.732	.93		
A 6L51-032SF0608	32	.802	.782	.98		
A 6L51-036SF0608	36	.902	.882	1.09		
A 6L51-040SF0608	40	1.003	.983	1.19		
A 6L51-042SF0608	42	1.053	1.033	1.24	.3125	11/16
A 6L51-044SF0608	44	1.103	1.083	1.29		
A 6L51-048SF0608	48	1.203	1.183	1.39		
A 6L51-060SF0608	60	1.504	1.484	1.70		
A 6L51-065SF0610	65	1.629	1.609	1.82		
A 6L51-072SF0610	72	1.805	1.785	2.00		
A 6L51-080SF0610	80	2.005	1.985	2.21		
A 6L51-090SF0610	90	2.256	2.236	2.46		
A 6L51-100SF0610	100	2.506	2.486	2.71	11/16	
A 6L51-110SF0610	110	2.757	2.737	2.97		
A 6L51-120SF0610	120	3.008	2.988	3.22		
A 6L51-130SF0610	130	3.258	3.238	3.48		

- NOTES:**
1. Pulleys with 12 to 40 grooves do not have webs.
 2. Also available with set screws or pinning holes on special order.
 3. Special modifications available on request.