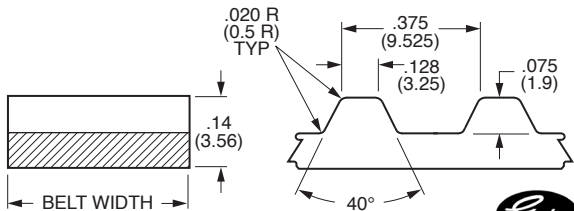




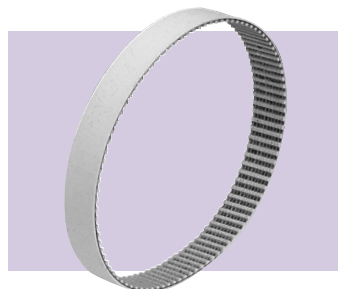
L Timing Belts – 3/8" or 9.525 mm Pitch

Stock Drive Products/Sterling Instrument Phone: 516-328-3300 Fax: 516-326-8827

- PowerGrip® TruMotion®
- 1/2 & 3/4 INCH - 12.5 & 19 mm WIDE
- NON-MARKING
- POLYMER COMPOUND
- LOW DUST
- RoHS COMPLIANT



NOTE: Dimensions in () are mm.



MATERIAL: Cream-Colored Polymer Compound, Fiberglass Reinforced Body with Nylon Tooth Facing for Reduced Dust

BREAKING STRENGTH: 125 lbs per 1/8 (175 N per 1 mm) belt width; not representative of the load-carrying capacity of the belt.

WORKING TENSION: 40 lbs for 1 in. belt (178 N for 25.4 mm belt).

For more information, see the technical section.

TEMPERATURE RANGE: -40°F to +220°F (-40°C to +104°C)

CATALOG NUMBER DESIGNATION:		Width Code	Belt Width	Example
I N C H	A 2 6 R 4 - <input type="text"/> <input type="text"/> <input type="text"/> <input type="text"/> <input type="text"/> <input type="text"/>	050 075	1/2 3/4	A26R 4-092075 is a 92 Groove 3/4 Wide Belt.
	No. of Grooves Code (See tables below)			
M E T R I C	A 2 6 R 4 M <input type="text"/> <input type="text"/> <input type="text"/> <input type="text"/> <input type="text"/> <input type="text"/>	125 190	12.5 mm 19 mm	A26R 4M046190 is a 46 Groove 19 mm Wide Belt.
	No. of Grooves Code (See tables below)			

Groove Code	Pitch Length	
	Inch	mm
033	314.33	12.375
036	342.90	13.5
040	381.00	15
041	390.53	15.375
042	400.05	15.75
044	419.10	16.5
046	438.15	17.25
047	447.68	17.625
050	476.25	18.75
052	495.30	19.5
053	504.83	19.875
054	514.35	20.25

Groove Code	Pitch Length	
	Inch	mm
056	533.40	21
058	552.45	21.75
060	571.50	22.5
064	609.60	24
066	628.65	24.75
068	647.70	25.5
070	666.75	26.25
072	685.80	27
076	723.90	28.5
080	762.00	30
084	800.10	31.5
086	819.15	32.25

Groove Code	Pitch Length	
	Inch	mm
092	876.30	34.5
098	933.45	36.75
100	952.50	37.5
104	990.60	39
112	1066.80	42
119	1133.50	44.625
120	1143.00	45
128	1219.20	48
136	1295.40	51
144	1371.60	54
151	1438.30	56.625
152	1447.80	57

Groove Code	Pitch Length	
	Inch	mm
155	1476.38	58.125
160	1524.00	60
168	1600.20	63
176	1676.40	66
192	1828.80	72
195	1857.38	73.125
218	2076.50	81.75
240	2286.00	90
244	2324.10	91.5
252	2400.30	94.5
294	2800.40	110.25

Special Widths - cut to size from sleeves available from stock.

Pulleys are available with inch or metric standards.