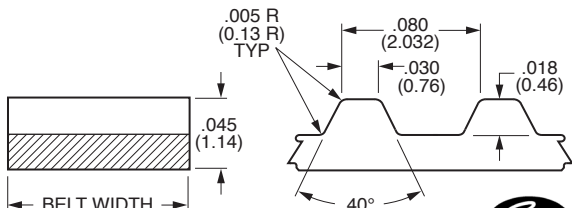




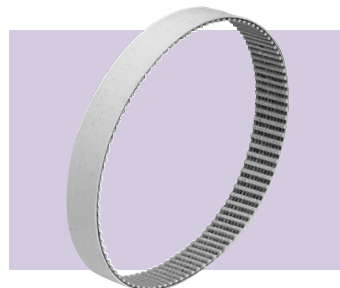
MXL Timing Belts – .080" or 2.03 mm Pitch

Stock Drive Products/Sterling Instrument Phone: 516-328-3300 Fax: 516-326-8827

- PowerGrip® TruMotion® ■ 1/8, 3/16, 1/4, 5/16 & 3/8 INCH - 3, 4.5, 6, 8 & 9.5 mm WIDE
- NON-MARKING ■ POLYMER COMPOUND ■ LOW DUST ■ RoHS COMPLIANT



NOTE: Dimensions in () are mm.



Continued on the next page

MATERIAL: Cream-Colored Polymer Compound, Fiberglass Reinforced Body with Nylon Tooth Facing for Reduced Dust.

BREAKING STRENGTH: 51 lbs per 1/8 (72 N per 1 mm) belt width; not representative of the load-carrying capacity of the belt.

WORKING TENSION: 15 lbs for 1 in. belt (67 N for 25.4 mm belt).

For more information, see the technical section.

TEMPERATURE RANGE: -40°F to +220°F (-40°C to +104°C)

CATALOG NUMBER DESIGNATION:		Width Code	Belt Width	Example
I N C H	A 2 6 Z 1 6 – <input type="checkbox"/> <input type="checkbox"/> <input type="checkbox"/> <input type="checkbox"/> <input type="checkbox"/> <input type="checkbox"/>	012	1/8	A26Z16-040018 is a 40 Groove 3/16 Wide Belt.
	No. of Grooves Code	018	3/16	
	Width Code	025	1/4	
	(See tables below)	031	5/16	
	(See right)	037	3/8	
M E T R I C	A 2 6 Z 1 6 M <input type="checkbox"/> <input type="checkbox"/> <input type="checkbox"/> <input type="checkbox"/> <input type="checkbox"/> <input type="checkbox"/>	030	3 mm	A26Z16M085045 is an 85 Groove 4.5 mm Wide Belt.
	No. of Grooves Code	045	4.5 mm	
	Width Code	060	6 mm	
	(See tables below)	080	8 mm	
	(See right)	095	9.5 mm	

Groove Code	Pitch Length	
	Inch	mm
040	3.20	81.28
042	3.36	85.34
045	3.60	91.44
047	3.76	95.5
050	4.00	101.6
054	4.32	109.73
055	4.40	111.76
057	4.56	115.82
058	4.64	117.86
059	4.72	119.89
060	4.80	121.92
061	4.88	123.95

Groove Code	Pitch Length	
	Inch	mm
064	5.12	130.05
065	5.20	132.08
067	5.36	136.14
068	5.44	138.18
070	5.60	142.24
071	5.68	144.27
072	5.76	146.3
074	5.92	150.37
076	6.08	154.43
077	6.16	156.46
079	6.32	160.53
080	6.40	162.56

Groove Code	Pitch Length	
	Inch	mm
082	6.56	166.62
083	6.64	168.66
085	6.80	172.72
087	6.96	176.78
088	7.04	178.82
090	7.20	182.88
092	7.36	186.94
093	7.44	188.98
094	7.52	191.01
095	7.60	193.04
097	7.76	197.1
100	8.00	203.2

Groove Code	Pitch Length	
	Inch	mm
102	8.16	207.26
103	8.24	209.3
105	8.40	213.36
106	8.48	215.39
107	8.56	217.42
108	8.64	219.46
109	8.72	221.49
110	8.80	223.52
112	8.96	227.58
114	9.12	231.65
120	9.60	243.84
122	9.76	247.9

Special Widths - cut to size from sleeves available from stock.
Pulleys are available with inch or metric standards.



MXL Timing Belts – .080" or 2.03 mm Pitch

Stock Drive Products/Sterling Instrument ■ Phone: 516-328-3300 ■ Fax: 516-326-8827

- PowerGrip® TruMotion® ■ 1/8, 3/16, 1/4, 5/16 & 3/8 INCH - 3, 4.5, 6, 8 & 9.5 mm WIDE
- NON-MARKING ■ POLYMER COMPOUND ■ LOW DUST ■ RoHS COMPLIANT

Continued from the previous page

CATALOG NUMBER DESIGNATION:		Width Code	Belt Width	Example
I N C H	A 2 6 Z 1 6 - <input type="checkbox"/> <input type="checkbox"/> <input type="checkbox"/> <input type="checkbox"/> <input type="checkbox"/> <input type="checkbox"/>	012	1/8	A26Z16-165025 is a 165 Groove 1/4 Wide Belt.
	No. of Grooves Code (See tables below)	018	3/16	
	Width Code (See right)	025	1/4	
		031	5/16	
		037	3/8	
M E T R I C	A 2 6 Z 1 6 M <input type="checkbox"/> <input type="checkbox"/> <input type="checkbox"/> <input type="checkbox"/> <input type="checkbox"/> <input type="checkbox"/>	030	3 mm	A26Z16M153095 is a 153 Groove 9.5 mm Wide Belt.
	No. of Grooves Code (See tables below)	045	4.5 mm	
	Width Code (See right)	060	6 mm	
		080	8 mm	
		095	9.5 mm	

Groove Code	Pitch Length	
	Inch	mm
123	9.84	249.94
125	10.00	254
126	10.08	256.03
130	10.40	264.16
132	10.56	268.22
140	11.20	284.48
144	11.52	292.61
150	12.00	304.8
153	12.24	310.9
155	12.40	314.96
165	13.20	335.28
166	13.28	337.31
170	13.60	345.44
175	14.00	355.6

Groove Code	Pitch Length	
	Inch	mm
180	14.40	365.76
184	14.72	373.89
190	15.20	386.08
195	15.60	396.24
200	16.00	406.4
208	16.64	422.66
210	16.80	426.72
212	16.96	430.78
215	17.20	436.88
221	17.28	449.07
222	17.76	451.1
225	18.00	457.2
230	18.40	467.36
245	19.60	497.84

Groove Code	Pitch Length	
	Inch	mm
248	19.84	503.94
249	19.92	505.97
250	20.00	508
251	20.08	510.03
260	20.80	528.32
265	21.20	538.48
280	22.40	568.96
295	23.60	599.44
300	24.00	609.6
315	25.20	640.08
324	25.92	658.37
347	27.76	705.1
371	29.68	753.87
372	29.76	755.9

Groove Code	Pitch Length	
	Inch	mm
400	32.00	812.8
412	32.96	837.18
424	33.92	861.57
434	34.72	881.89
435	34.80	883.92
440	35.20	894.08
453	36.24	920.5
487	38.96	989.58
498	39.84	1011.94
600	48.00	1219.2
612	48.96	1243.58
648	51.84	1316.74

Special Widths - cut to size from sleeves available from stock.
Pulleys are available with inch or metric standards.